

## ANCHORAGES

There are a number of other anchorages around Alderney, in addition to Braye. None provide any facilities, and all are only safe in calm weather and/or offshore winds. Clockwise from Braye these are: Saye - sandy bottom; Longis Bay - sandy bottom, dries a long way out, a good place to wait for fair tide in the Race; Telegraph Bay - on SW point of island, small sandy bay that dries from half-tide down, holding patchy in sand and heads of rock; Hannaine Bay - S. of Fort Clonque, a good place to wait for fair tide through the Swinge; Burhou - the Lug, SW end of Burhou, below half-tide on the SW stream.

## HARBOUR MASTER AND COASTGUARD

Harbour Master and Coastguard are located at the Harbour Master's Office, at the SW end of the harbour. Weather forecasts and reports at the Harbour Master's Office or on VHF from Alderney Radio, which can also supply a Radar VTS and RDF service. The Harbour Master's office provides the Coastguard Service.

## VHF RADIO

Call 'Alderney Radio', VHF 16, 74. The Harbour launch also listens on Ch.74, call 'Harbour Launch'. If not obtainable, call St. Peter Port Radio, Guernsey (Ch.16,20) or CROSSMA (French Coastguard, CH 16, 13, 80, etc.).

## FACILITIES - IN THE HARBOUR

There are 70 yellow visitors' mooring buoys, and it is possible to raft up on these in good weather. All other mooring buoys are private and should not be used without permission. The anchorage in the middle of the bay has good holding ground in sand, but there are areas of rock and weed. Towards the entrance of the harbour, the bottom is generally more rocky. Because of the tidal range at Springs (up to 6.9m), a good scope of anchor line should be used, especially if anchoring in shoal areas. It is not permitted to anchor in the Fairway or close to Braye Jetty, or to tie up to Braye Jetty without permission.

## FACILITIES - AROUND THE HARBOUR

- The Harbour Master's Office is at the SW end of the harbour, near the entrance to Little Crabby Harbour. The dinghy pontoon, dinghy slipway, showers, toilets, launderette, telephones, chandlers and a skip for rubbish are all nearby. The launderette is in the same building as the showers, and uses £1 coins - both are open 24 hours a day in the summer, but the showers are closed in the winter.
- A water taxi service is in operation. Call Mainbrayce Taxi VHF Ch.37.
- The nearest post box is at the Railway Station by the crossroads at the end of Braye Street, about 1½ cables S of the harbour; only Alderney and Guernsey stamps may be used.
- Fresh water is available from alongside Mainbrayce Chandlers, and also from a tap at the top of the dinghy slipway and at Braye Jetty by arrangement with the Harbour Office.
- Mainbrayce Chandlers in Little Crabby Harbour is accessible to yachts approximately +/-2 hrs HW. A tide gauge at the entrance indicates depth of water alongside. Mainbrayce is open 0830-1800 seven days a week in the summer and provides fresh water, diesel, bottled gas, spares and mechanical assistance.

- Cranes with a maximum lift of approximately 25 tonnes are available from the Harbour Office.
- Duty-free diesel is available from Mainbrayce Limited (01481 822772) and by arrangement through the Harbour Master's office bulk quantities can be supplied by road tanker from Alderney Electricity Limited (01481 822715).
- Bottled gas is supplied by Mainbrayce Limited (01481 822772), Alderney Fuel Services (01481 823352) and Blanchard Buildings Supplies (01481 822722).

## THE ALDERNEY SAILING CLUB

Adjacent to the Harbour Office. The clubhouse is open from 1800-2000 every day during the summer and Thursday to Sunday during the winter and welcomes visiting yachtsmen.

## REGULATIONS

There is a speed limit of 4 knots in the harbour, and also in Saye, Corblets and Longis bays. It is not permitted to tie up to the Commercial Quay or the Breakwater, nor beach on Braye or Saye bays. For Customs clearance, Braye is the only port of entry, and all vessels entering from outside the Bailiwick of Guernsey must complete a customs form which will be supplied by the Harbour Launch or obtained from the Harbour Master's Office - UK forms are not valid. Customs must be notified of any animals aboard - UK rules apply.

## IMPORTANT TELEPHONE NUMBERS







**STD 01481 – from all other countries : +44 1481**

Harbour Master, Coastguard	822620	Fax 823699
Emergency	112 or 999	
Customs	823573	
Mainbrayce Chandlers	822772	Fax 823683
Police Station	824999	
Island Medical Centre	822077	
Eagle Medical Practice	822494	
Mignot Memorial Hospital	822822	
Dental Practice	823131	
Veterinary Clinic	822260	
Animal Welfare	822610	
Tourist Information Centre	823737 (day)	822333 (eve)
Tourist Board	822811	



## TAXIS

ABC Taxis	823760
Island Taxis	823823
Central Taxis	07781 100830
A1 Taxis	07781 440121

## BANKS AND FOREIGN EXCHANGE

In Town : HSBC   Lloyds TSB   NatWest   
Alderney Post Office 

At the Harbour : Channel Jumper  Mainbrayce Ltd 

 = Distributeur automatique de billets  = Bureau de change

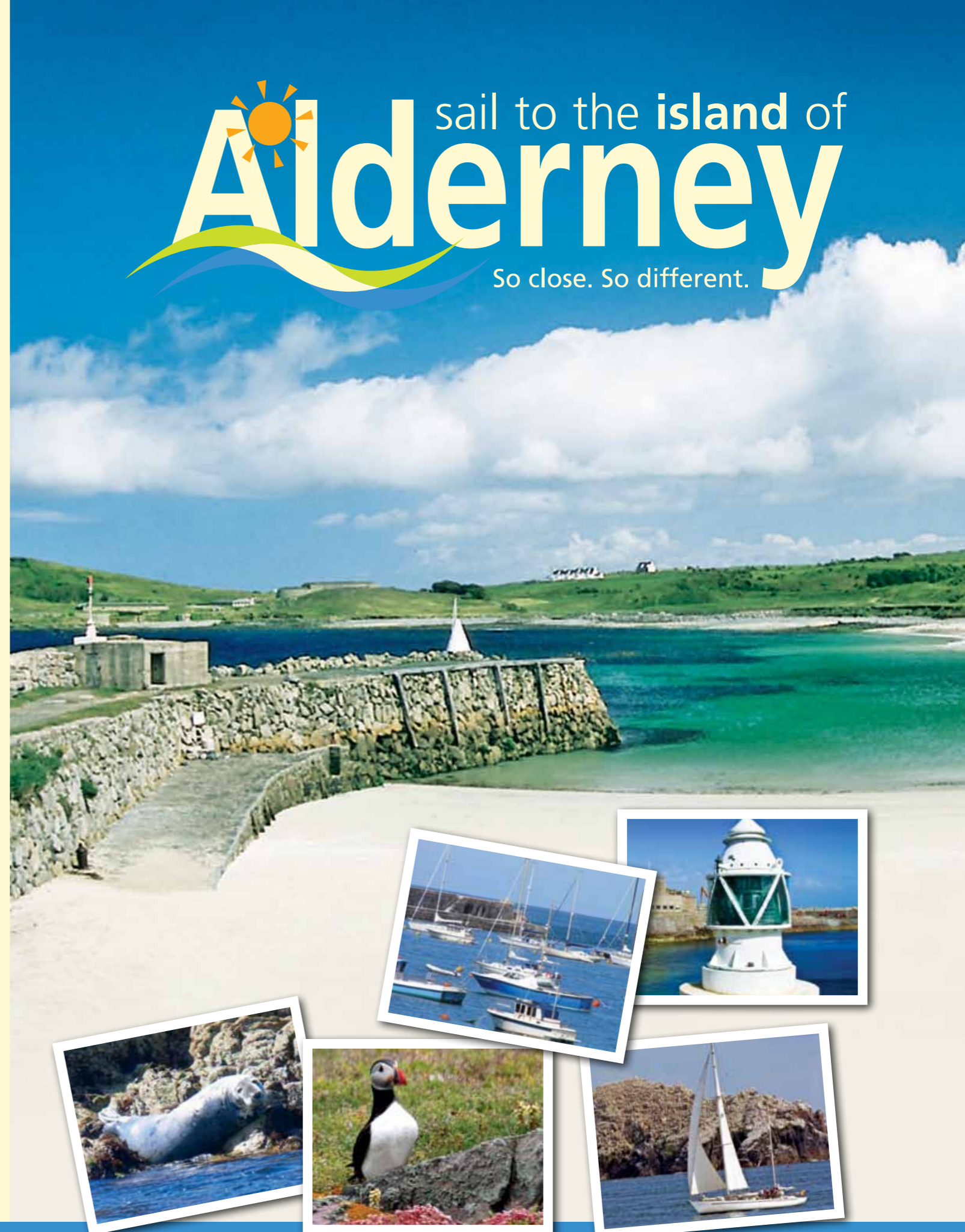
## INTERNET ACCESS

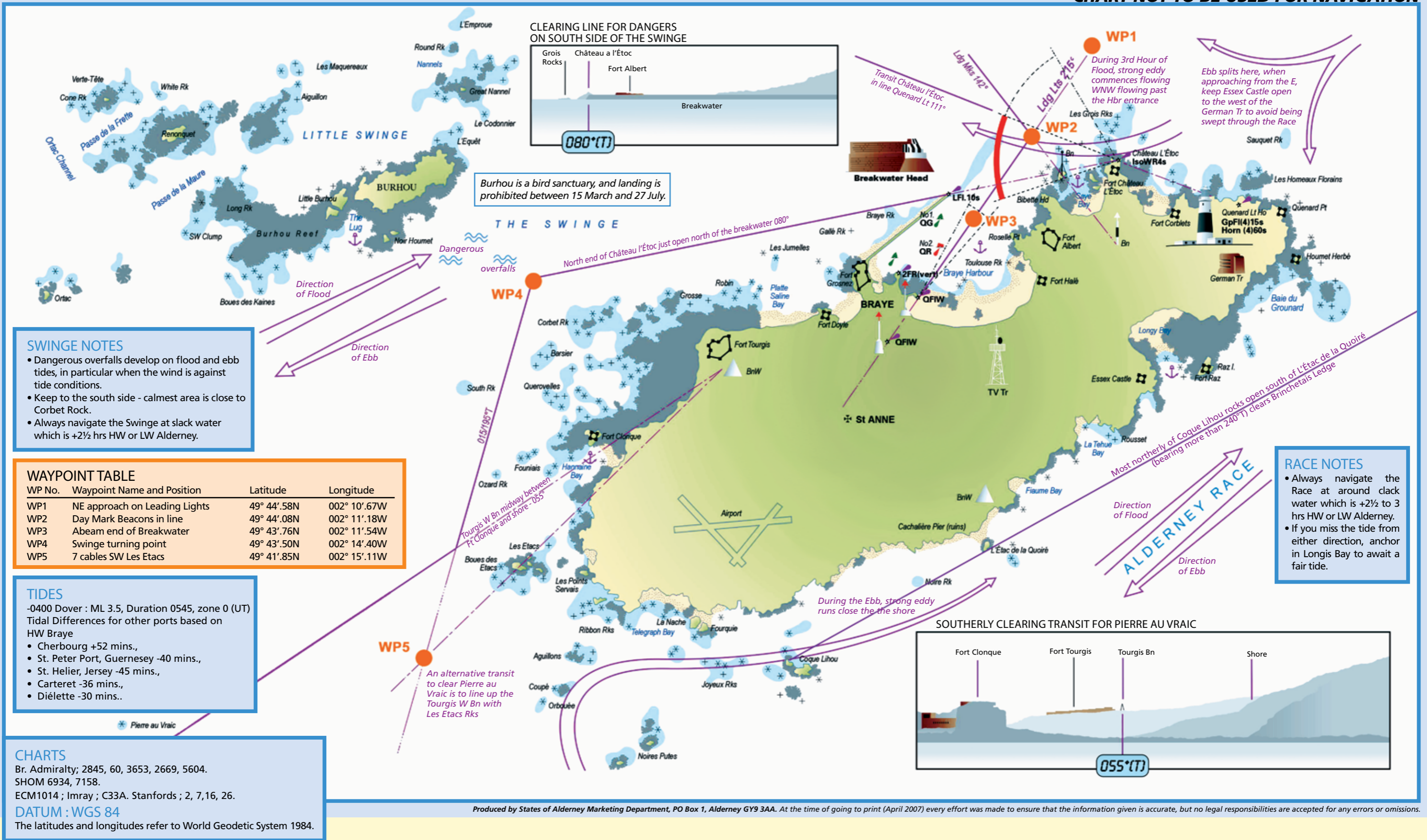
Channel Jumper (at the Harbour)	822202
The Tourist Information Centre (in Town)	823737
The Gift Box (in Town)	823532
Alderney Computing Flexi Centre (in Town)	824898

# Alderney

sail to the island of

So close. So different.





**SWINGE NOTES**

- Dangerous overfalls develop on flood and ebb tides, in particular when the wind is against tide conditions.
- Keep to the south side - calmest area is close to Corbet Rock.
- Always navigate the Swinge at slack water which is +2½ hrs HW or LW Alderney.

**WAYPOINT TABLE**

WP No.	Waypoint Name and Position	Latitude	Longitude
WP1	NE approach on Leading Lights	49° 44'.58N	002° 10'.67W
WP2	Day Mark Beacons in line	49° 44'.08N	002° 11'.18W
WP3	Abeam end of Breakwater	49° 43'.76N	002° 11'.54W
WP4	Swinge turning point	49° 43'.50N	002° 14'.40W
WP5	7 cables SW Les Etacs	49° 41'.85N	002° 15'.11W

**TIDES**

- 0400 Dover : ML 3.5, Duration 0545, zone 0 (UT)  
Tidal Differences for other ports based on HW Braye
- Cherbourg +52 mins.,
  - St. Peter Port, Guernsey -40 mins.,
  - St. Helier, Jersey -45 mins.,
  - Carteret -36 mins.,
  - Diélette -30 mins..

**CHARTS**

Br. Admiralty; 2845, 60, 3653, 2669, 5604.  
SHOM 6934, 7158.  
ECM1014 ; Imray ; C33A. Stanfords ; 2, 7,16, 26.

**DATUM : WGS 84**

The latitudes and longitudes refer to World Geodetic System 1984.

**NAVIGATION AND APPROACH**

Approaching Braye Harbour, care should be taken when using the Swinge or the Race; strong tidal streams (up to 9 knots in the Swinge and 11 knots in the Race) can create dangerous overfalls, especially with the wind over tide. It is recommended to use these passages at or near slack water (+2½ hr HW & 2½ hr LW Alderney). The tides run to the NE between +2½ hr LW and +2½ hr HW, and to the

SW between +2½ hr HW and +2½ hr LW. Apart from the strong tidal streams, Alderney has many rocks around it. The safest approach to Braye is from the NE.

**SHELTER**

Good in Braye Harbour, except in strong N-NE winds and occasionally in a heavy SW swell.

**LIGHTS AND MARKS**

Alderney Lt. Ho. Fl (4) 15 sec. Fog Signal; Horn (1) 30 sec. Braye Harbour Ldg. Lts. Both Q synch, lead 215° into hbr. Co-located daymarks, both orange triangles, lead 215°. From the NW, Iso WR 4s at Château à l'Étoc, visible arc R 071° - 111°, W 111° - 151°, in line with Alderney Lt. Ho., 111°, clears the submerged ruins of the Breakwater. There is a light, L F1 10s, at the remaining end of the Breakwater.

The Harbour Fairway is marked by 5 buoys, QG and QR at its outer end, and Q (2) G 5 sec, towards its centre, and QG (3) and QR (3) 5 sec on approach to Little Crabby Harbour. The Commercial Quay end is marked by 2 FR (vert) lights and the entrance to Little Crabby Harbour by FG and FR lights.

Produced by States of Alderney Marketing Department, PO Box 1, Alderney GY9 3AA. At the time of going to print (April 2007) every effort was made to ensure that the information given is accurate, but no legal responsibilities are accepted for any errors or omissions.